

acque sotterranee come fonte di approvvigionamento idrico

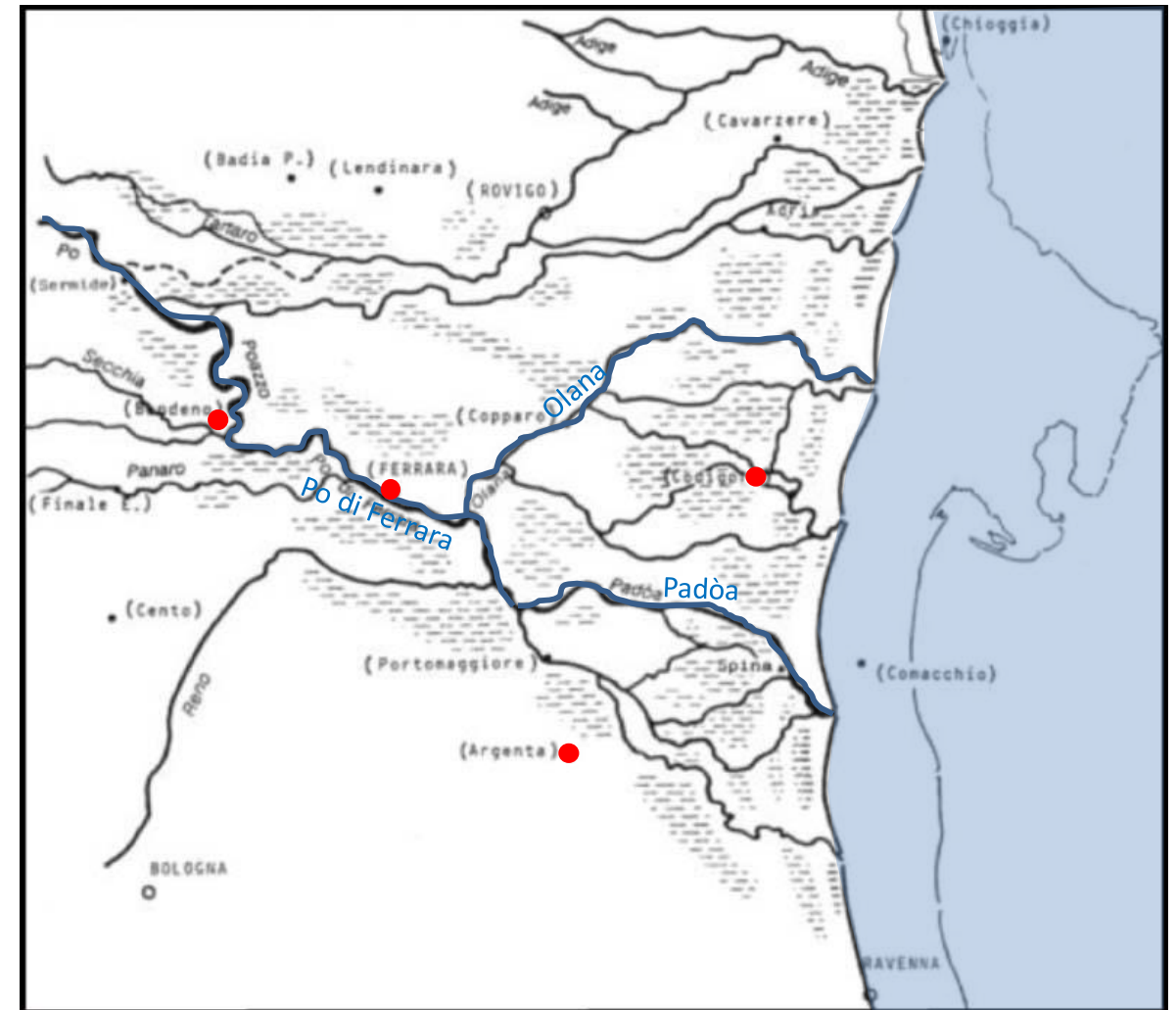
Dimitra Rapti
(cpr@unife.it)

New Energies And environment

Spin-off Company of Ferrara University, Dept. of Physics
and Earth Sciences, via Saragat, 1 – 44121 Ferrara – Italy

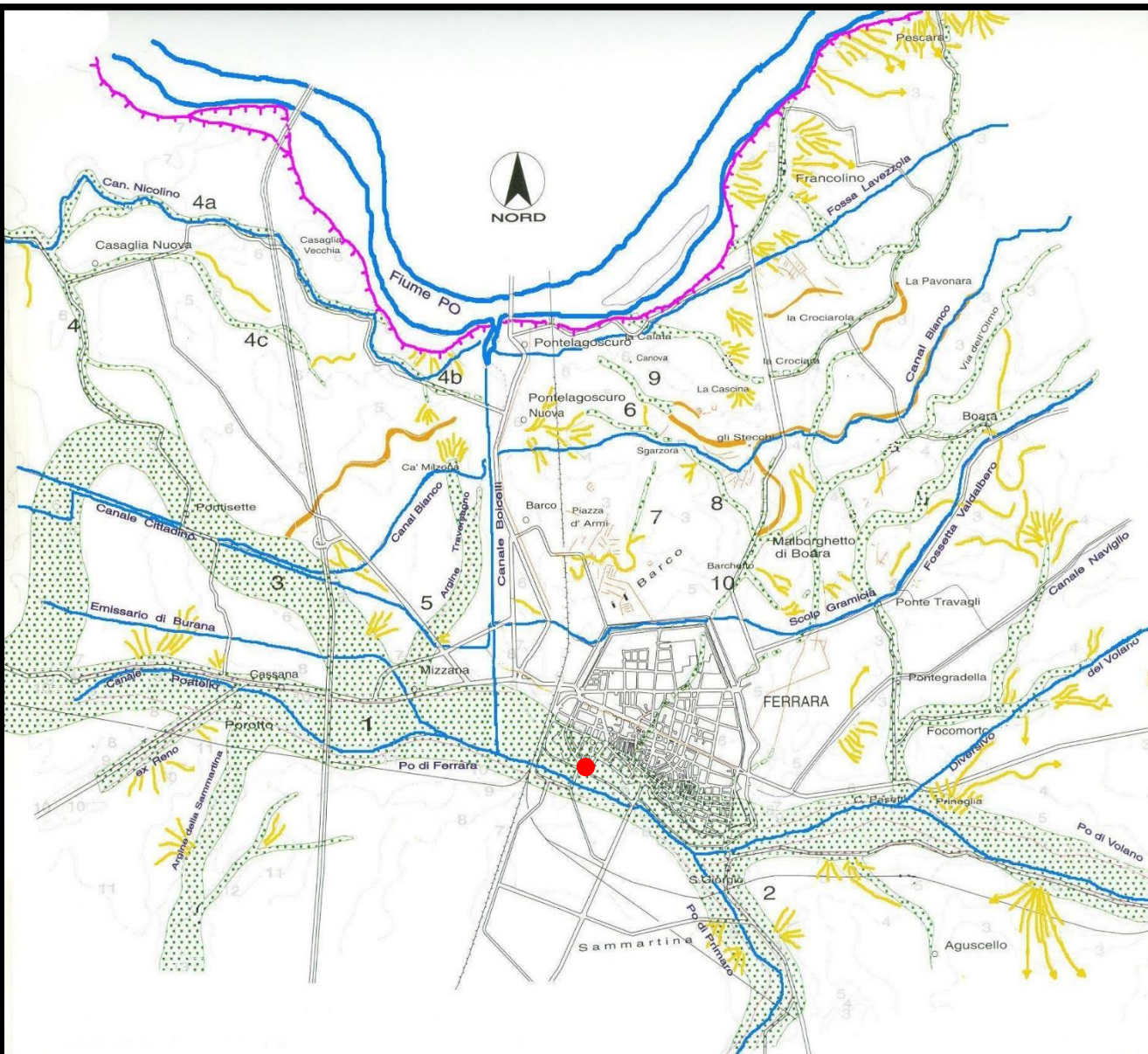


fine dell'Età del Bronzo (X secolo a.C.)

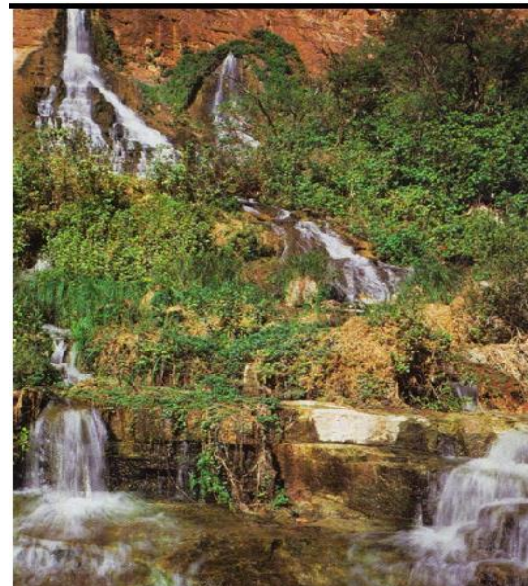


Età Etrusca (VI-IV secolo a.C.)

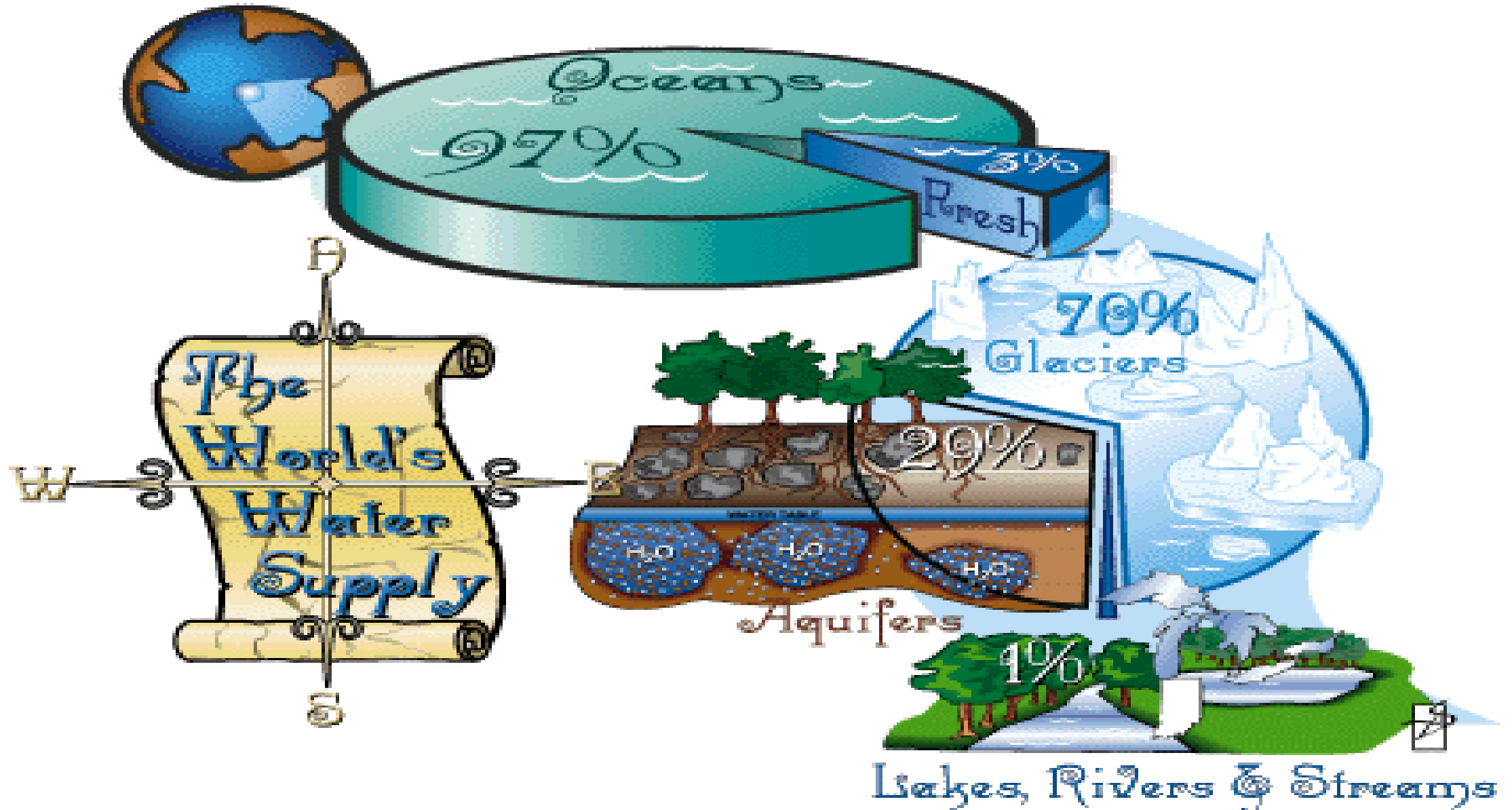
(Bondesan, 1990)



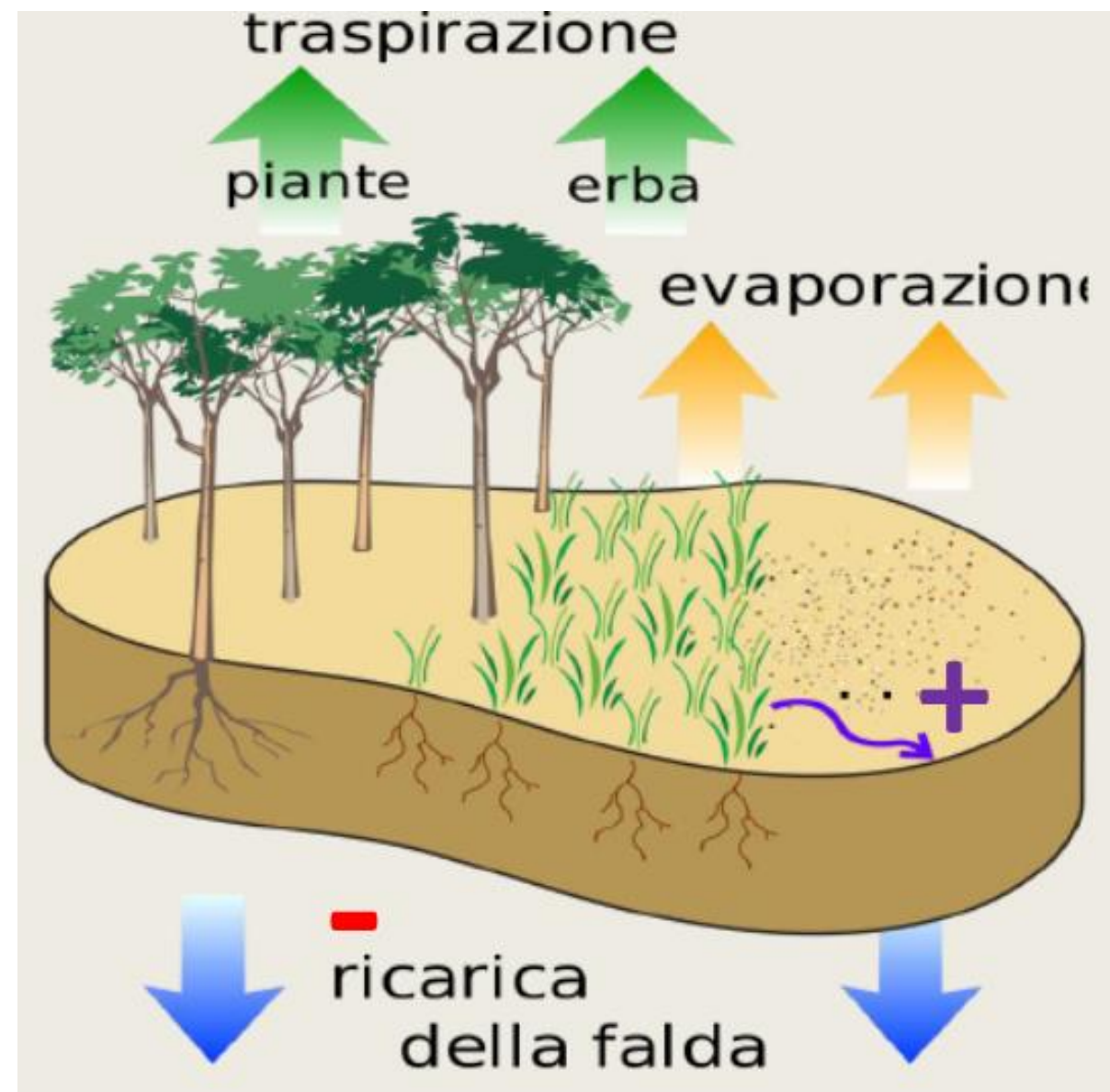
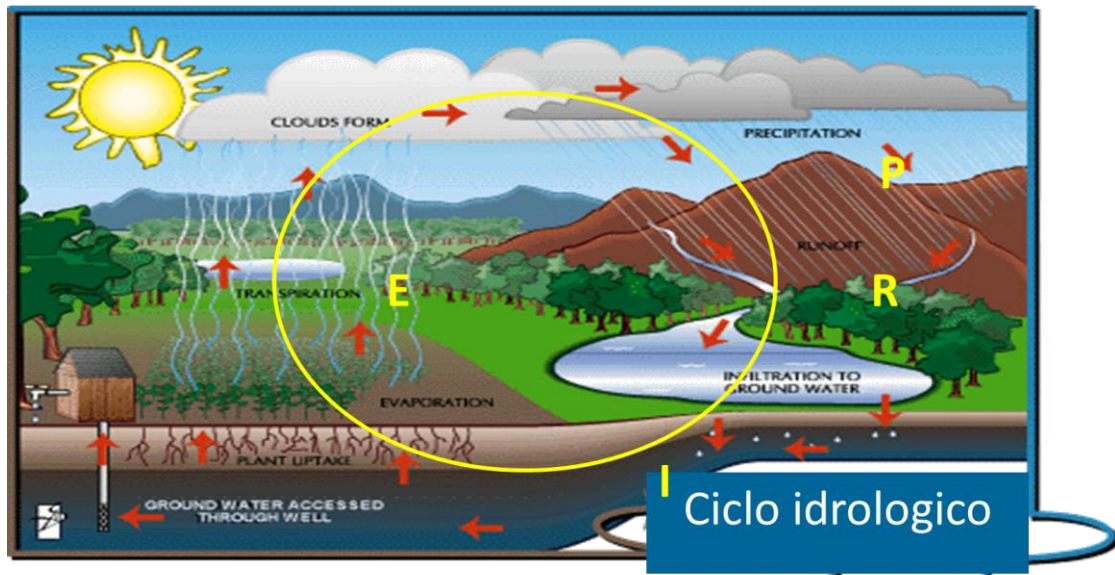
quant'acqua c'è?



distribuzione dell'acqua

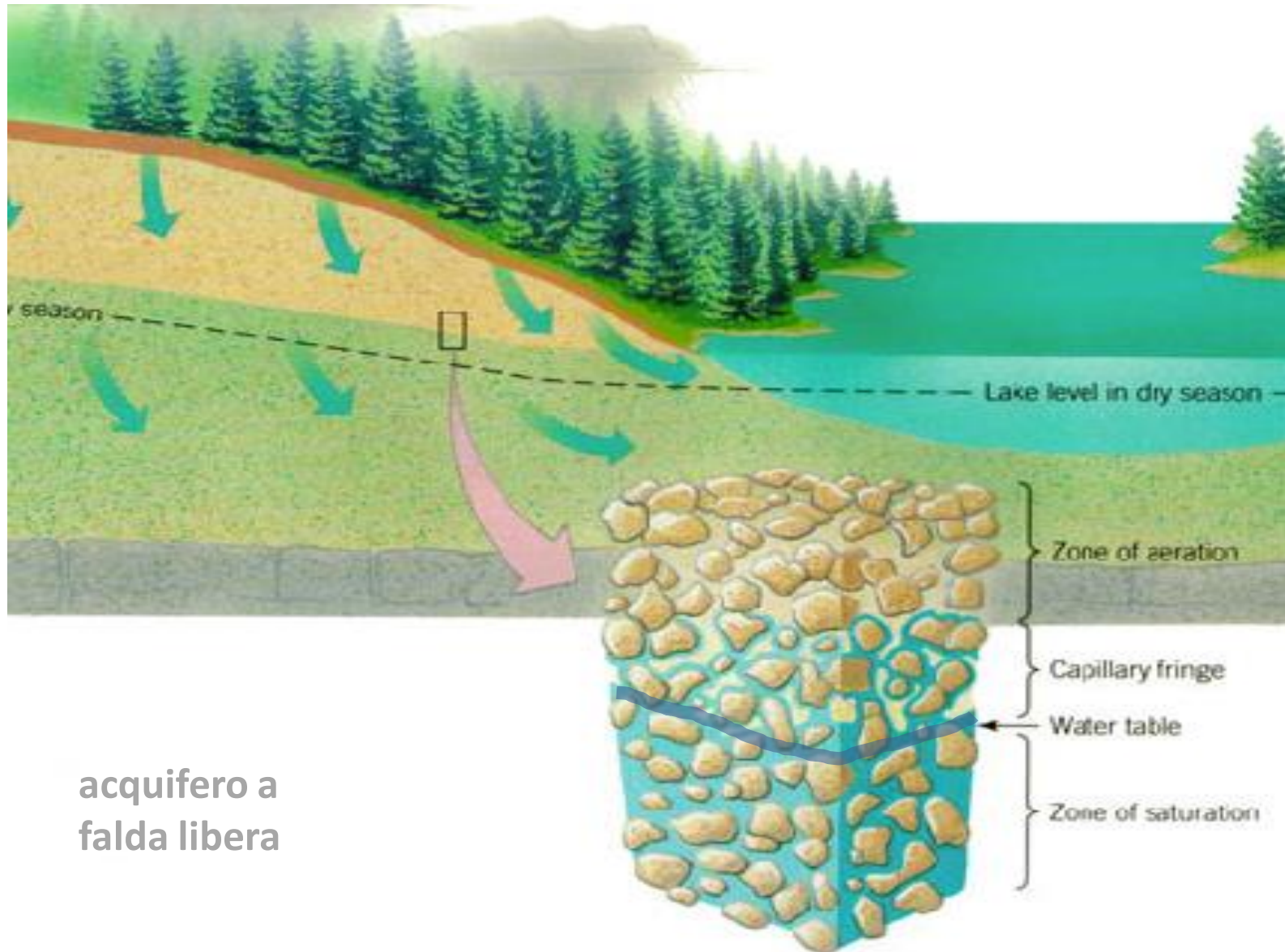


$$P = R + E + I$$

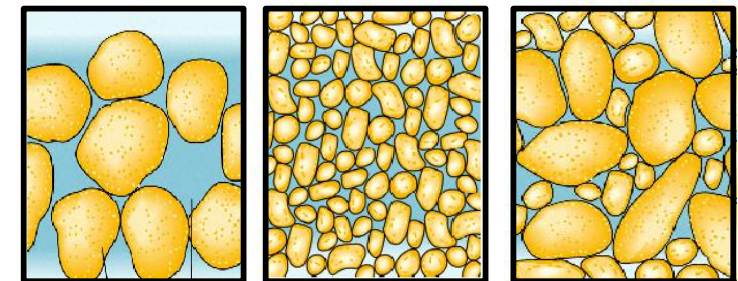
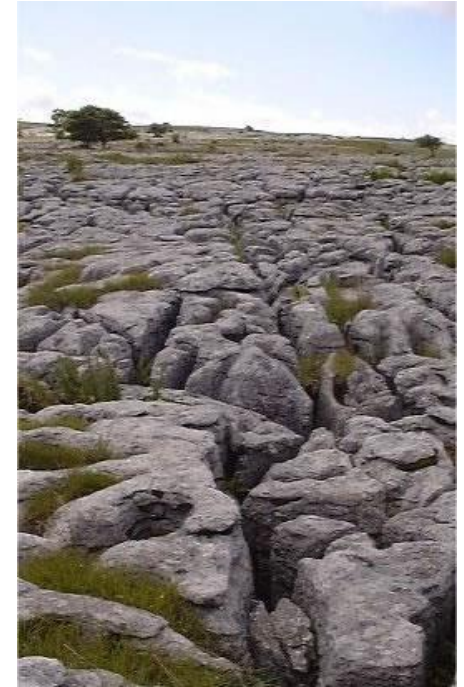


effetti dei cambiamenti climatici

(intense precipitazioni – siccità)



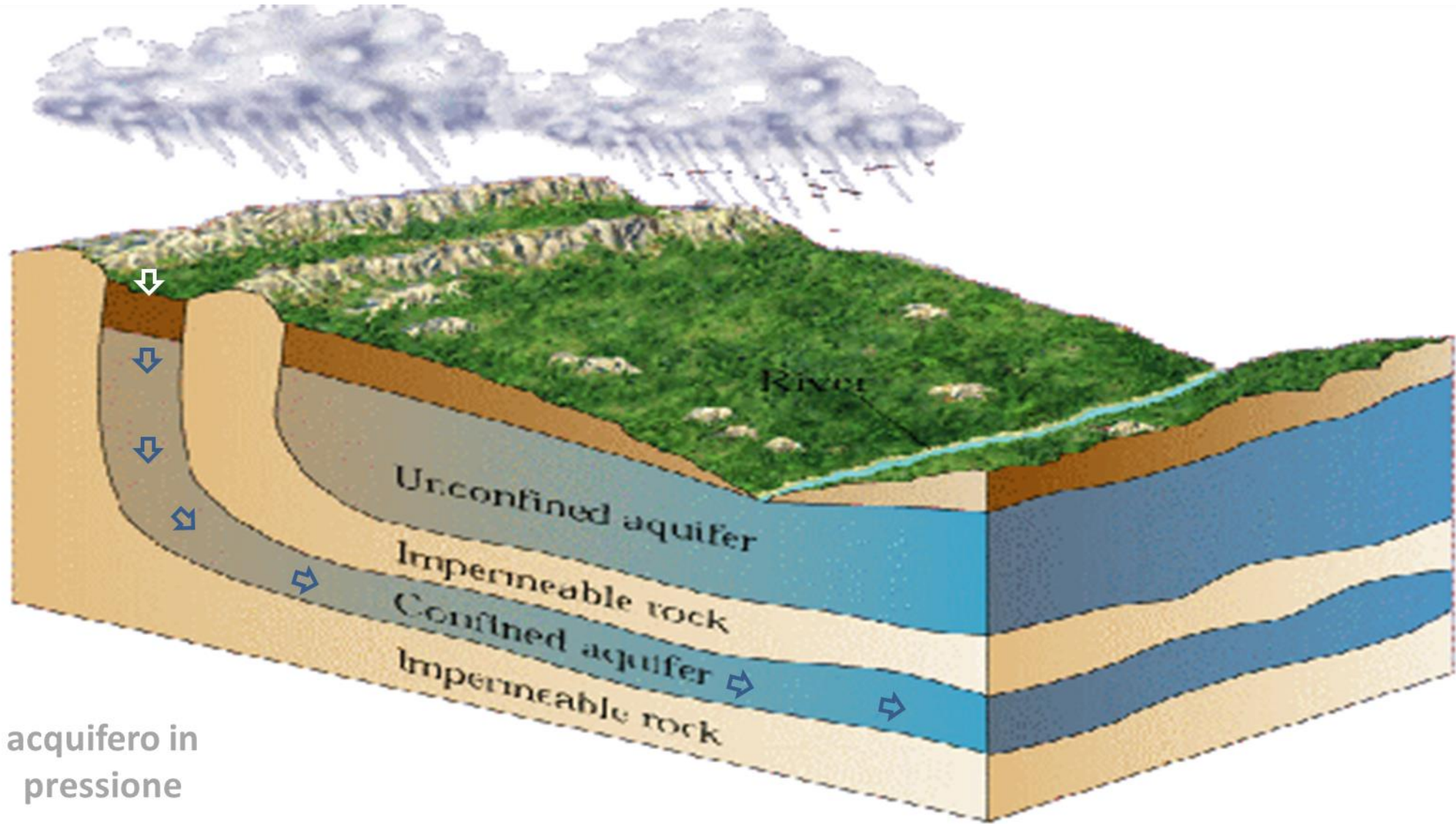
acquifero a
falda libera



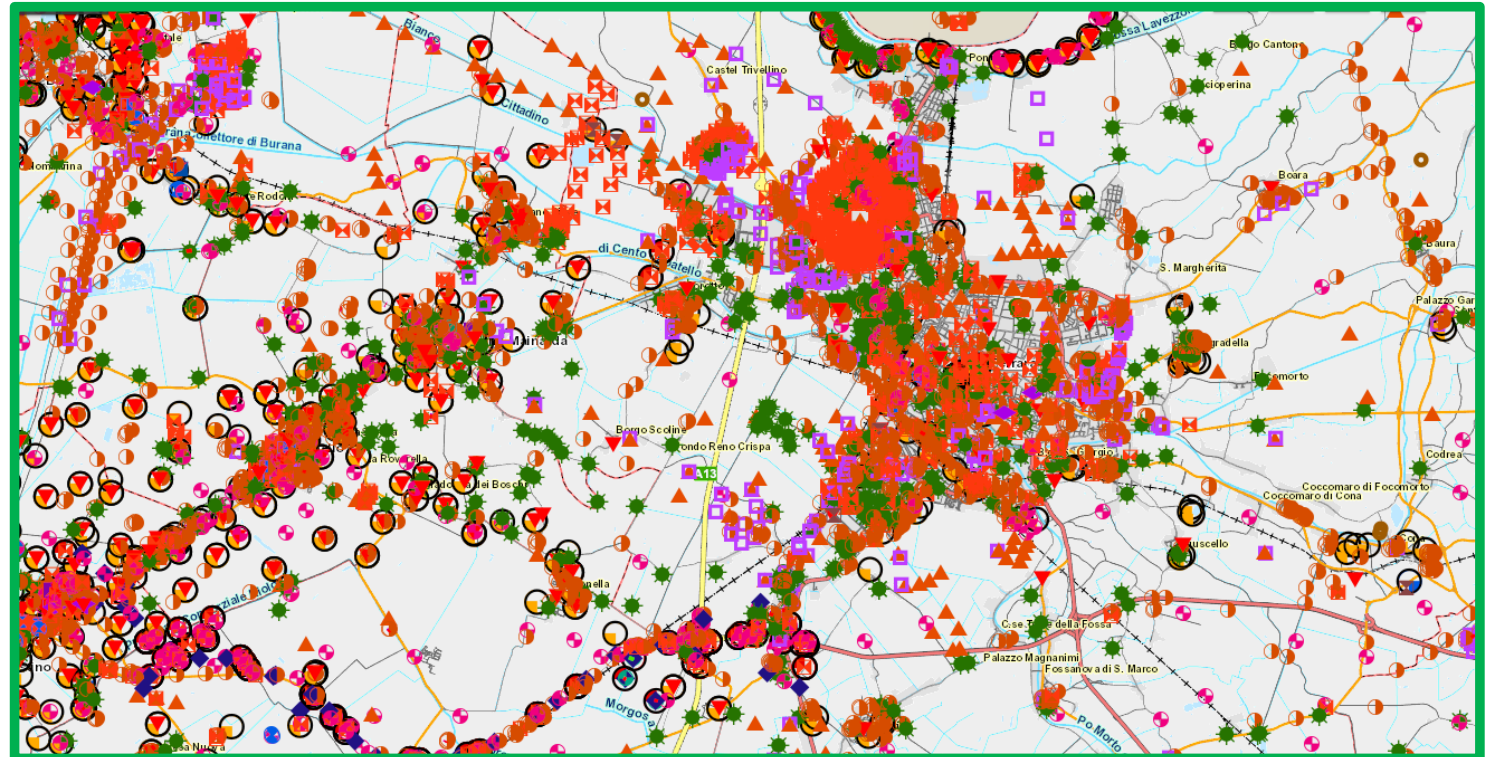
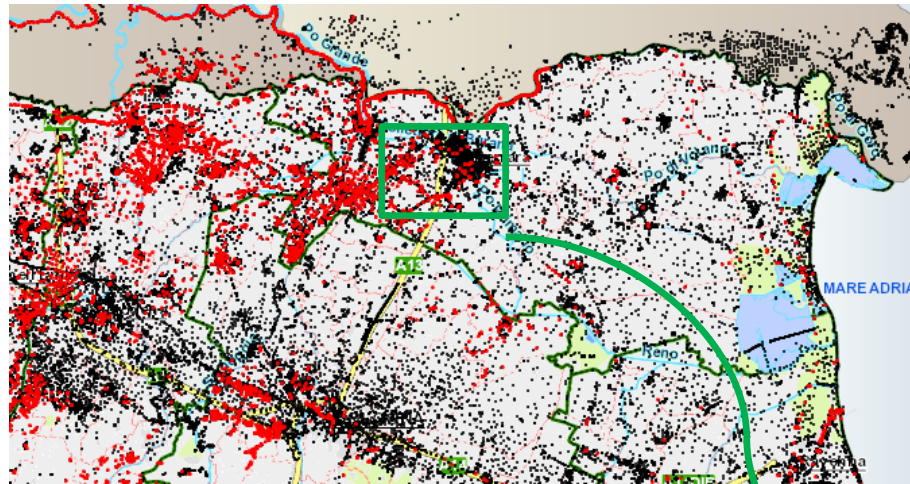


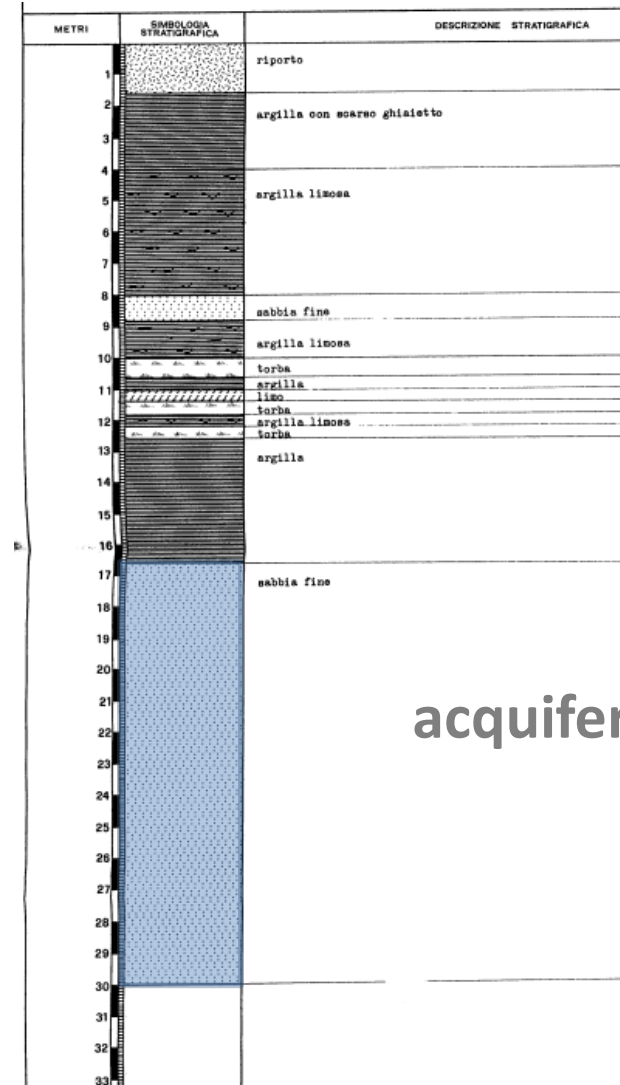
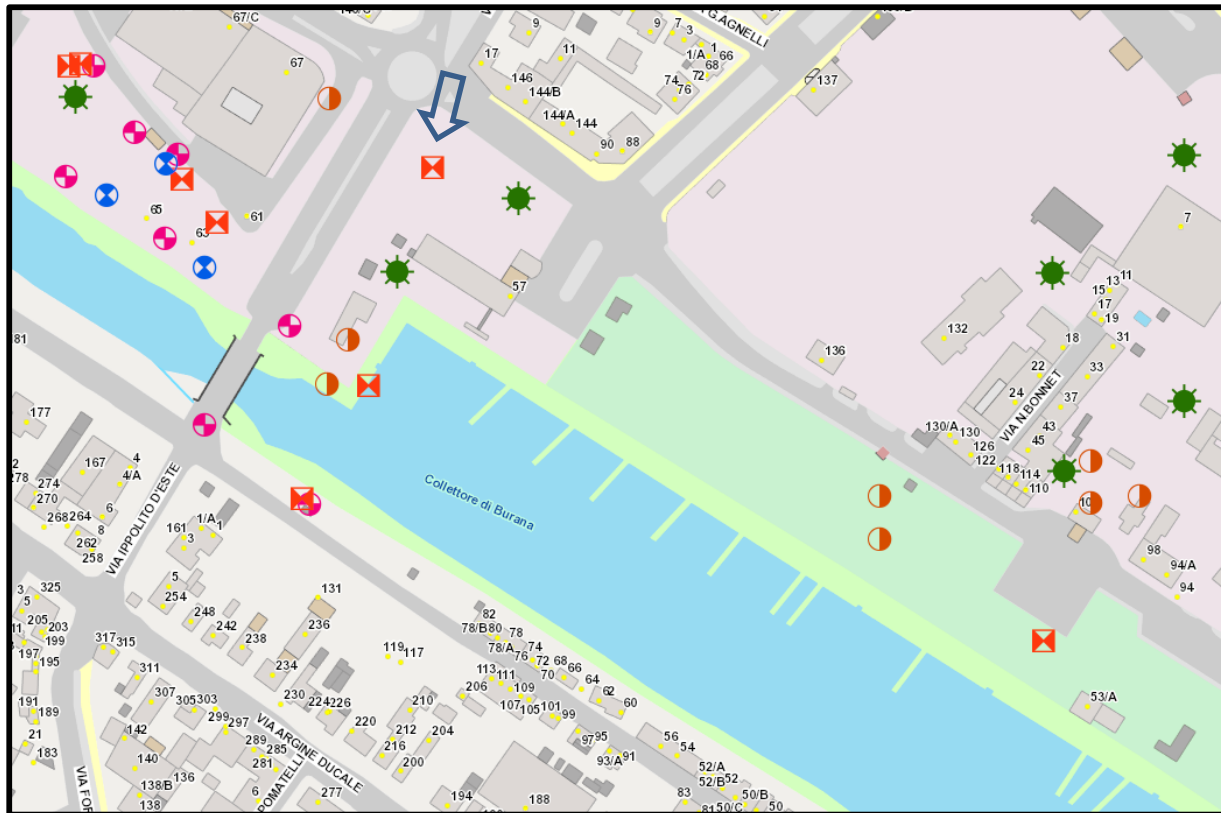
IL MONASTERO DI S. ANTONIO IN POLESINE
pozzo quattrocentesco del sagrato della chiesa



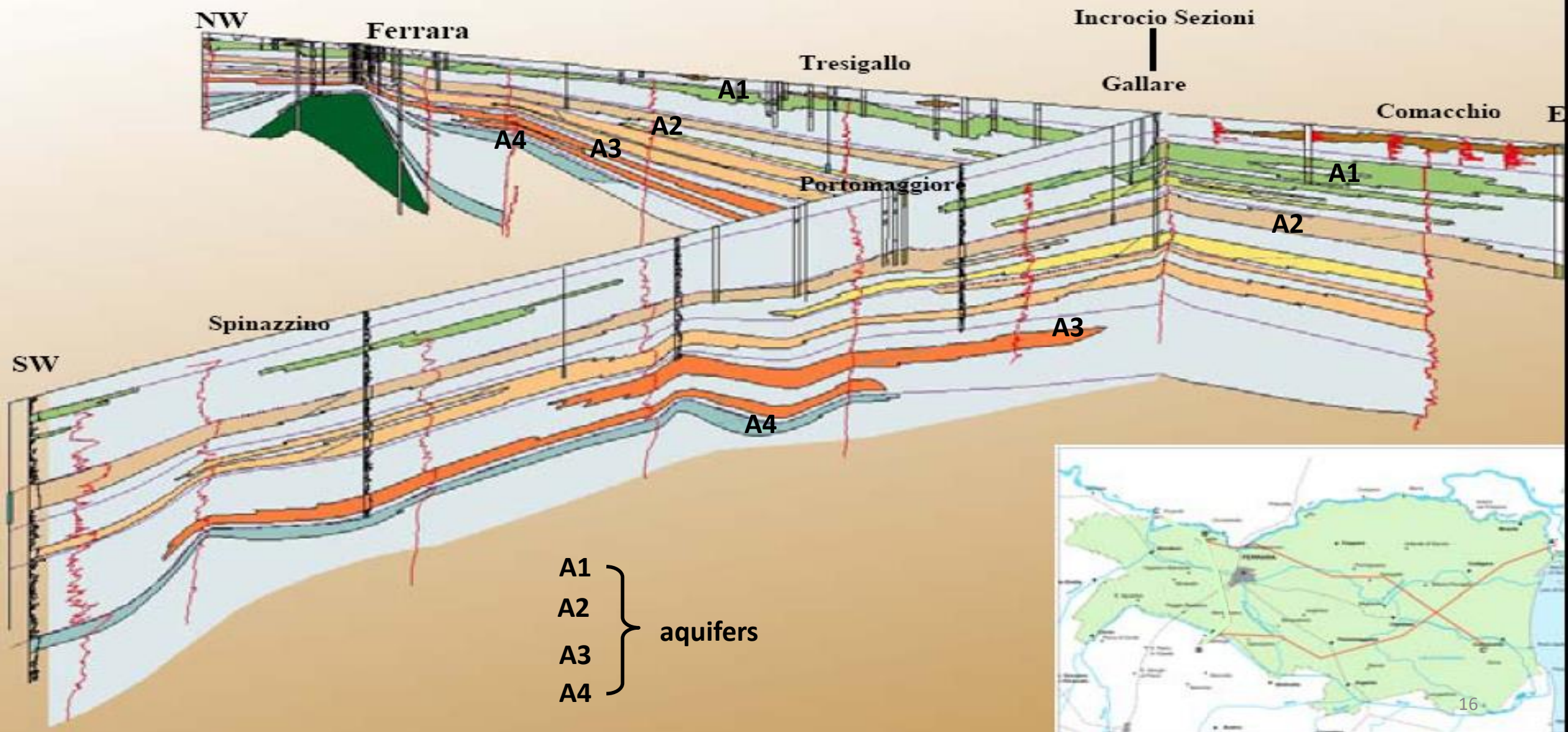


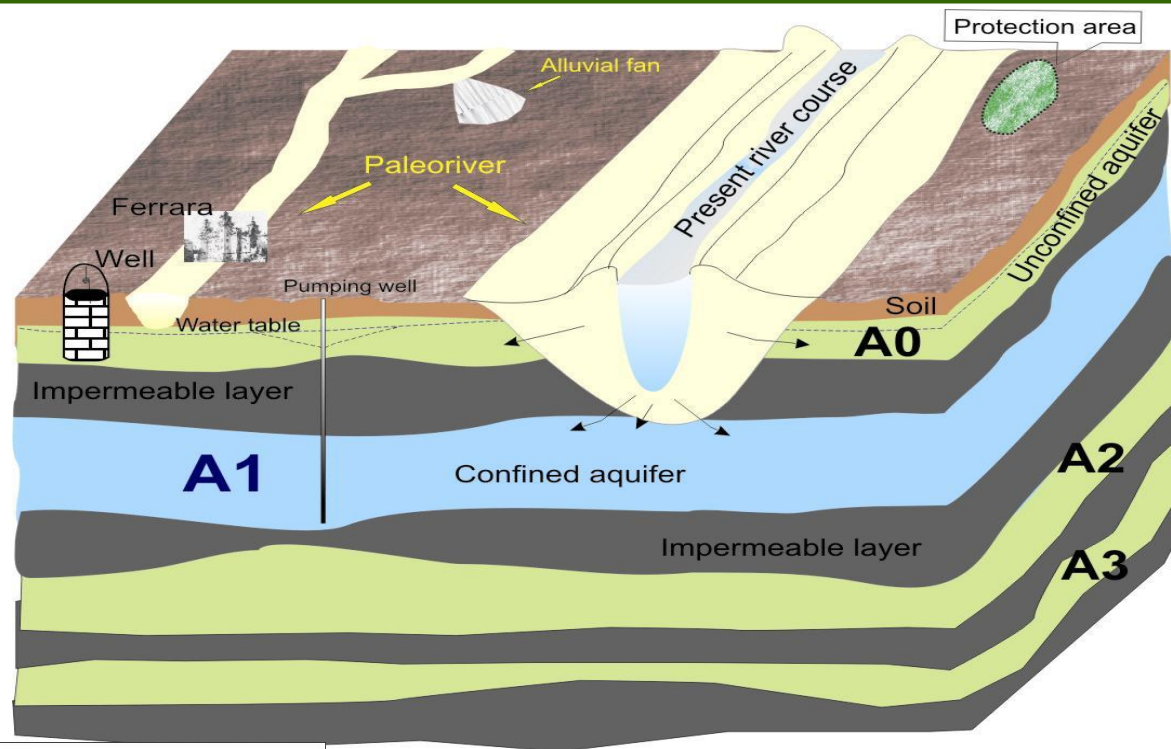
acquifero in
pressione





acquifero A1

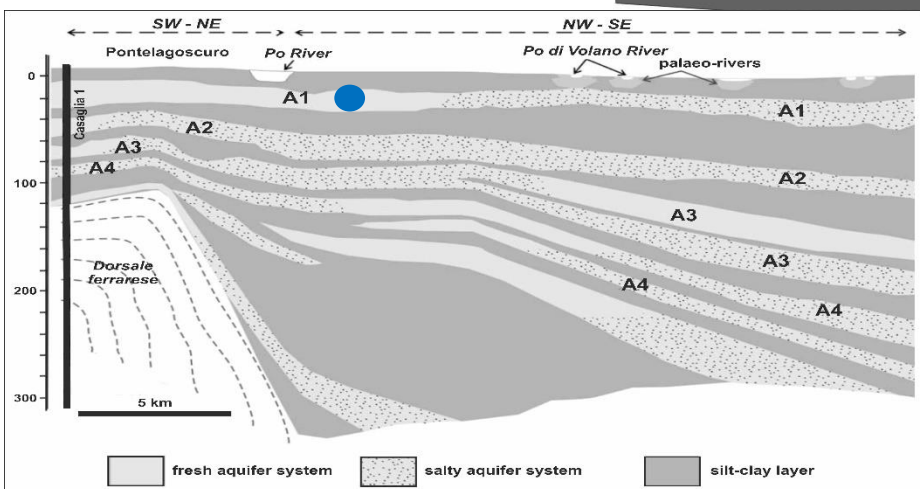


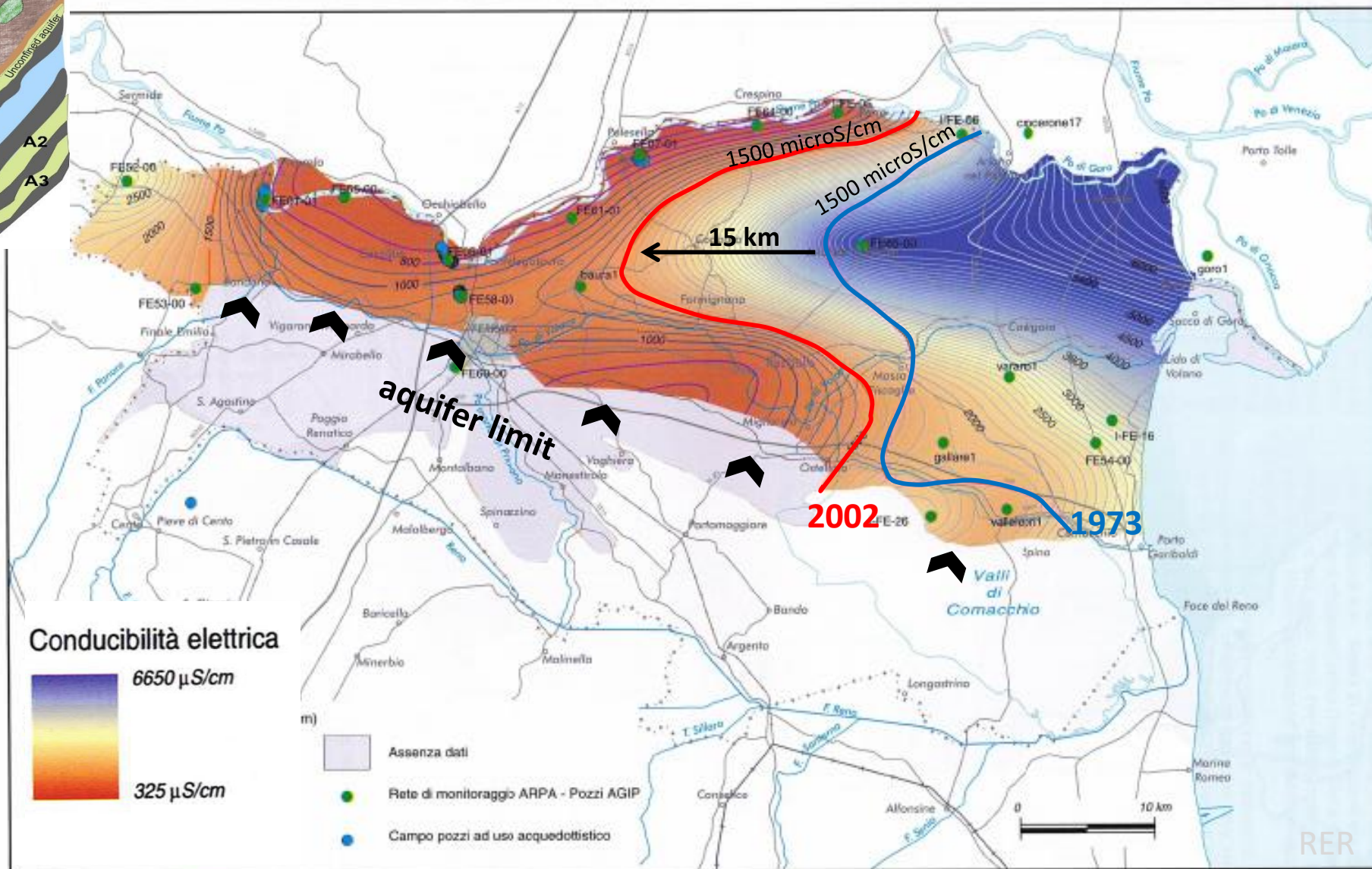
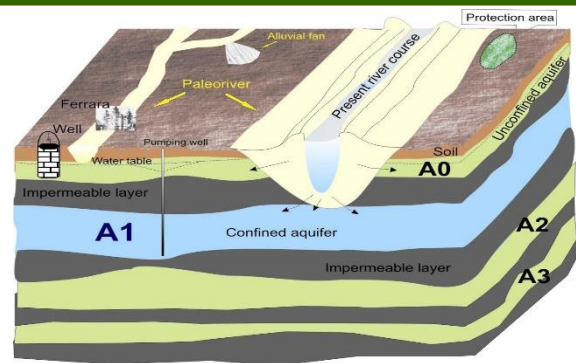


profondità tetto
15-30 m

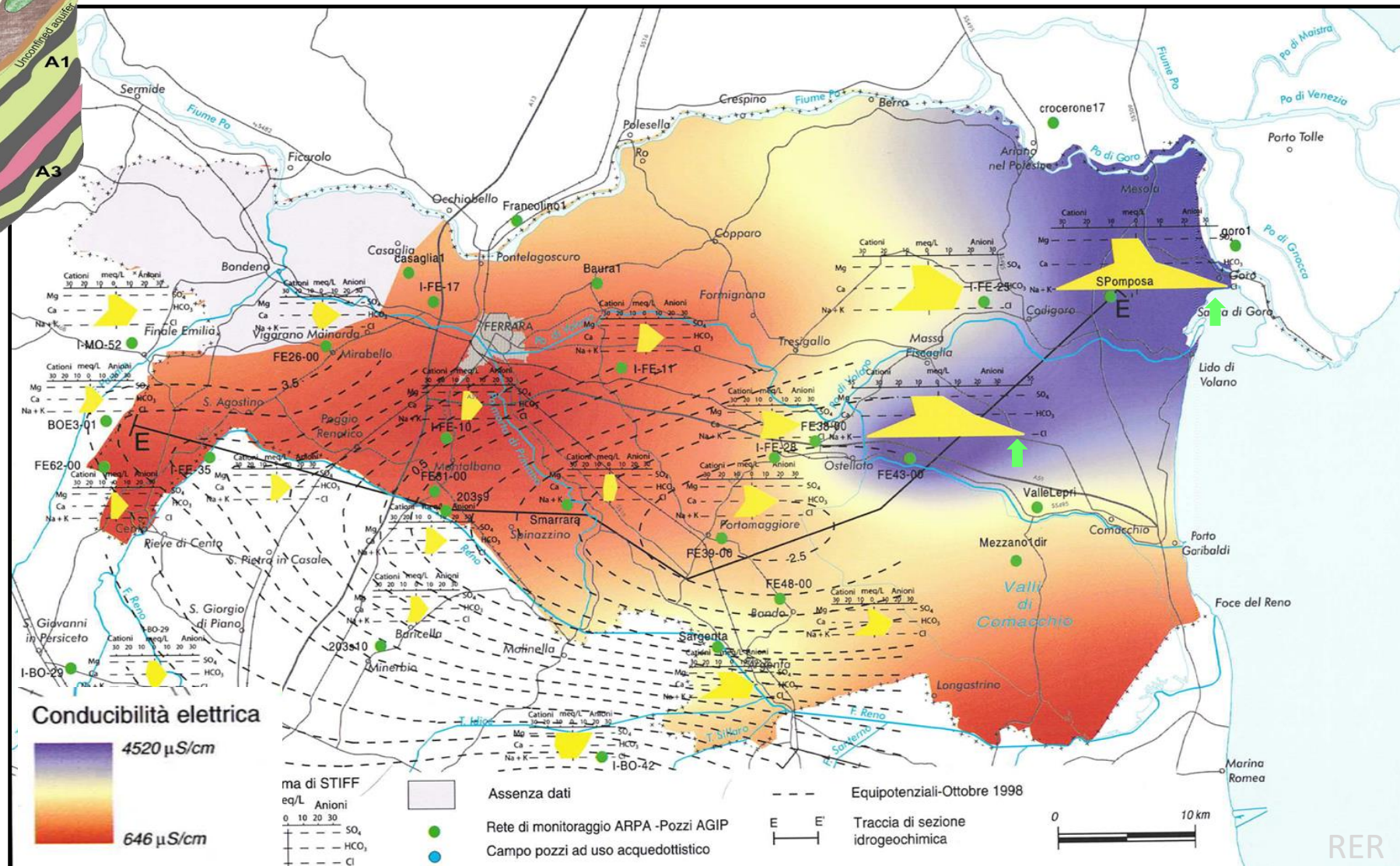
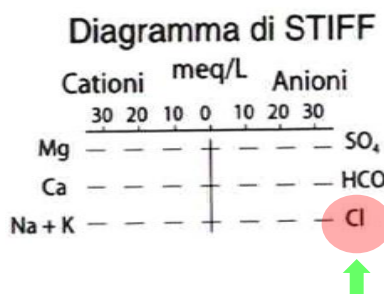
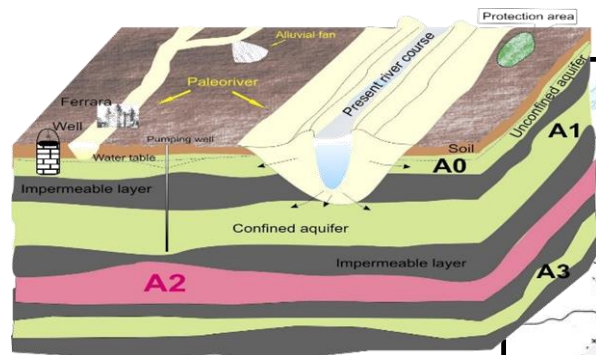


alimentazione





acquifero A2 - chimismo





consapevolezza

*razionale utilizzo
delle risorse
idriche*

Acque sotterranee come fonte di approvvigionamento idrico

Dimitra Rapti
(cpr@unife.it)

New Energies And environment

Spin-off Company of Ferrara University, Dept. of Physics
and Earth Sciences, via Saragat, 1 – 44121 Ferrara – Italy